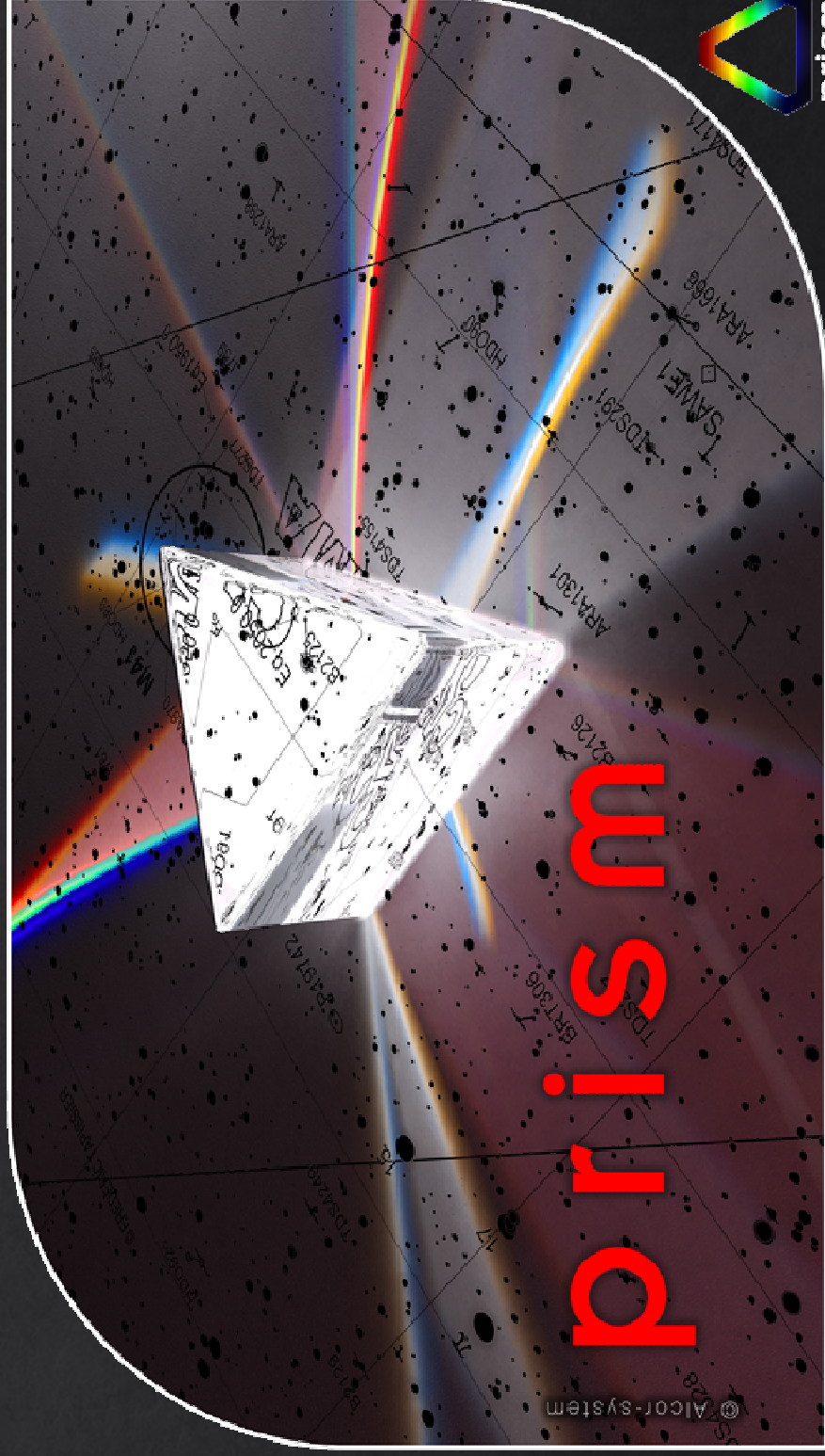


PRISM v10 (Pro-am 2015)



Qu'est Prism ?

- ◇ Logiciel intégré tout en un
 - ◇ Acquisition, prétraitement traitement, analyse
 - ◇ Existe depuis longtemps
- ◇ Autres logiciels : assemblage de modules (auto focalisation, astrométrie, modèle de pointage, pilotage de dôme, observations automatiques, inspection des performance optiques...)
- ◇ Complexité de communication entre les modules
- ◇ Fiabilité en moins
- ◇ Coûts de chaque module

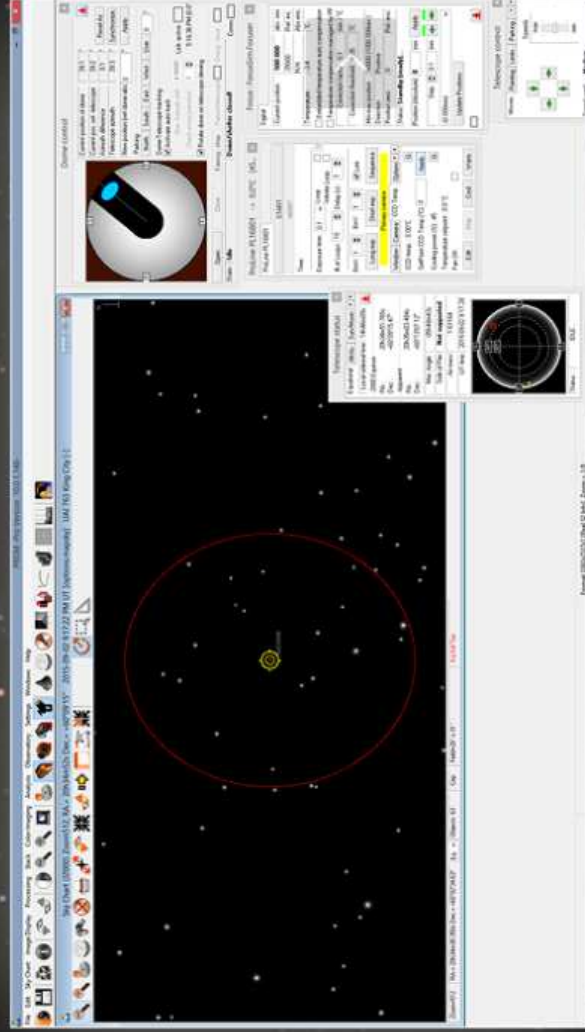
<http://prism-america.com/>



Introducing Prism The First Astro Imaging Software That Does It All

Contact Us

PRODUCTS SUPPORT GALLERIES ABOUT US



Equipment Control



Quoi de neuf (v10) ?

- ◇ Arrangement des menus complètement revu (simplification/nettoyage)
- ◇ Interface de la carte du ciel « standardisée »
- ◇ Carte du ciel plus réaliste
- ◇ Catalogues « internet »
- ◇ Icône et graphismes (différents looks de Prism)
- ◇ Configuration centralisée des équipements
- ◇ Astrometry.net
- ◇ 2 roues a filtres
- ◇ 3 cameras CCD
- ◇ APN traité comme une camera CCD (Observation automatique)
- ◇ Aide complètement réorganisée et mise à jour.



Quoi de neuf ?

- ❖ Intégration native des cameras FLI
- ❖ Amélioration du guidage en mode spectro
- ❖ Intégration du FITS totalement égale à celui du CPA.
- ❖ Observations spectro (statistiques temps réel)
- ❖ Plus encore : 200 modifications de tout genre, dans tous les domaines ...

151	When creating a FITS image include the key word SWCREATE = 'Prism V10.0.000'	BS			3	Completed
152	Fix the Interface Panel in Software settings Zoom is wrong (honestly not sure what was meant - Sorry)	BS			3	Completed
153	Add ' bread crumbs' trail to asteroids/comets during animation	BS			3	Completed
154	Must resolve Sigma Kappa Stack - 2 versions now, which one? Both?	BS	X		1	Completed
155	Selected Image Browser in File menu but nothing happens	CC			X	1
156	Batch file conversion does nothing	CC			X	1
157	On DDP can't see the check box and message string below After Processing	CC	X			1
158	Change in Sky Chart GoTo Coord. Negative Delta to Negative DEC.	BS			1	Completed
159	Remove demo Trial watermark at the image's center	CC			1	Completed
160	Do image HISTORY (like calibration) of processing	BS			1	Completed
161	Download catalog parts for Vizier	CC			2	Completed
162	Change Software protection Key Generation scheme	CC			1	Completed
163	Script commands : some in French,	BS			1	Completed
164	Update Key license server	CC			1	Completed
165	45 days demo for US version	BS			1	Completed
166	Asteroid detect - output parameters to the log file	BS	X		1	Completed
167	Statistic box at end exposure produce plot, for spectrographers	CC			4	Completed
168	Cyril to document Export to RAW 2	BS			1	Completed
169	Cyril to provide new screenshots for Import Data for 2D plot	BS			1	Completed
170	Need Plug in samples	BS			1	Completed

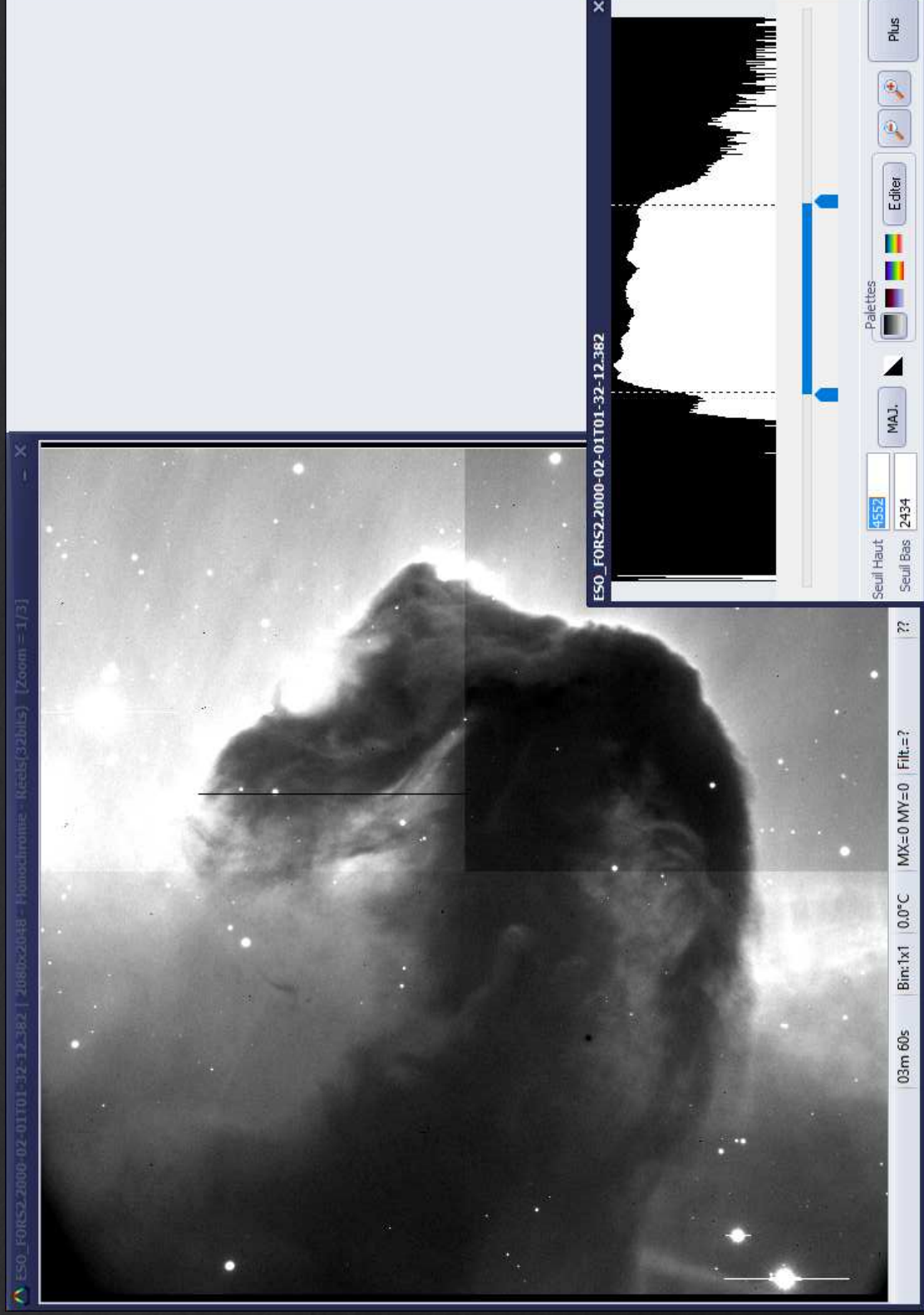


Les différentes Versions

- ◇ **Version « basic » : 1 Camera CCD + APN**
 - ◇ 1 Camera CCD + APN
 - ◇ Pas de scripts, ni observations automatiques
- ◇ **Version Pro**
 - ◇ 2 caméras CCD, scripts et observations automatiques
- ◇ **Version avancée**
 - ◇ 60 fonctions avancées (caractérisation camera CCD)
 - ◇ 3 caméras CCD



Visualisation monochrome



Visualisation couleur

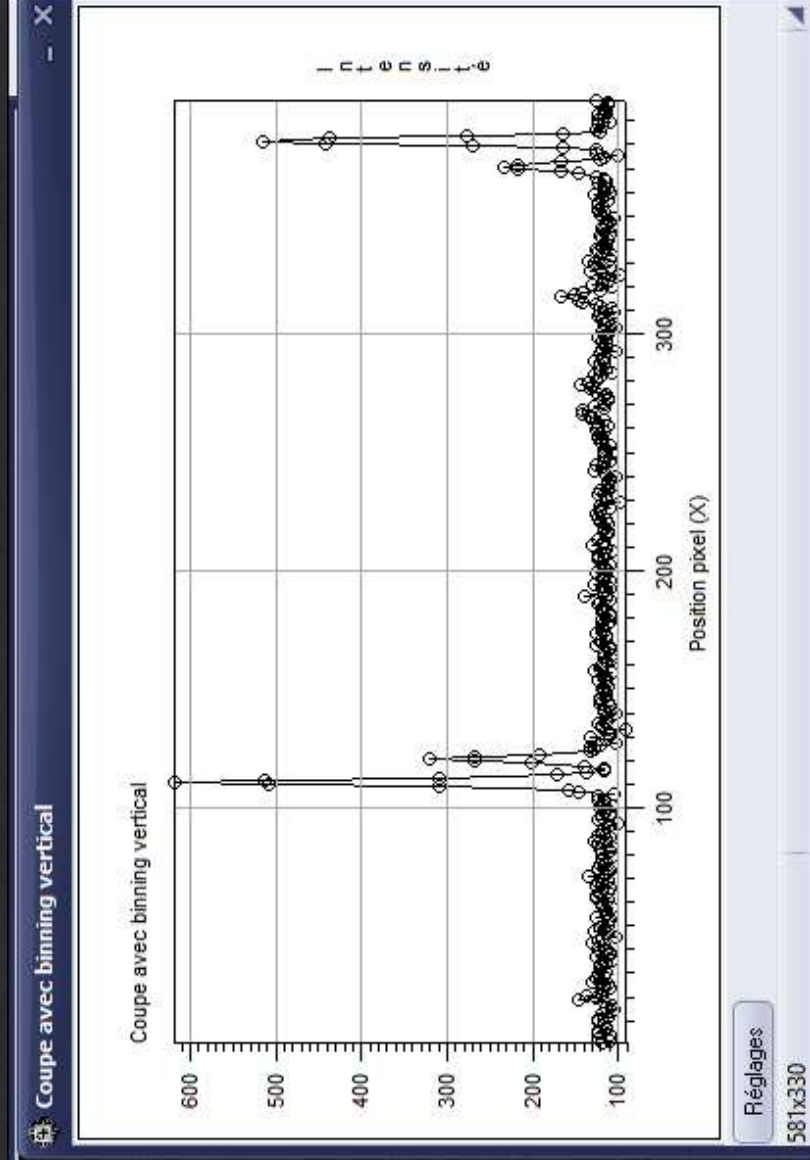
The screenshot displays the TRICHO-Real software interface. The main window shows a color visualization of a nebula, with a central region appearing in shades of purple and blue, surrounded by a field of stars. The interface includes a top status bar with the following information: TRICHO-Real | 505x505 - Couleur - Keck1 (32bits) [Zoom = 1]. Below the main image, there are controls for Bin: 1x1, 0.0°C, MX=0 MY=0, and Filt.=?.

On the right side, there is a control panel for histogram visualization. It features two histograms: "Histogramme de sortie affichage, niveaux 0-255" (top) and "Histogramme d'entrée image" (bottom). The top histogram shows a multi-colored distribution, while the bottom histogram shows a red distribution. A vertical slider is positioned between the two histograms. Below the histograms, there are radio buttons for "Canal Rouge", "Canal Vert", and "Canal Bleu", with "Canal Rouge" selected. A "Tous les Canaux" option is also present. A "MAJ." button is located below the radio buttons. At the bottom of the control panel, there are input fields for "Seuil Haut: 4443" and "Seuil Bas: 3685", along with a "Plus" button.

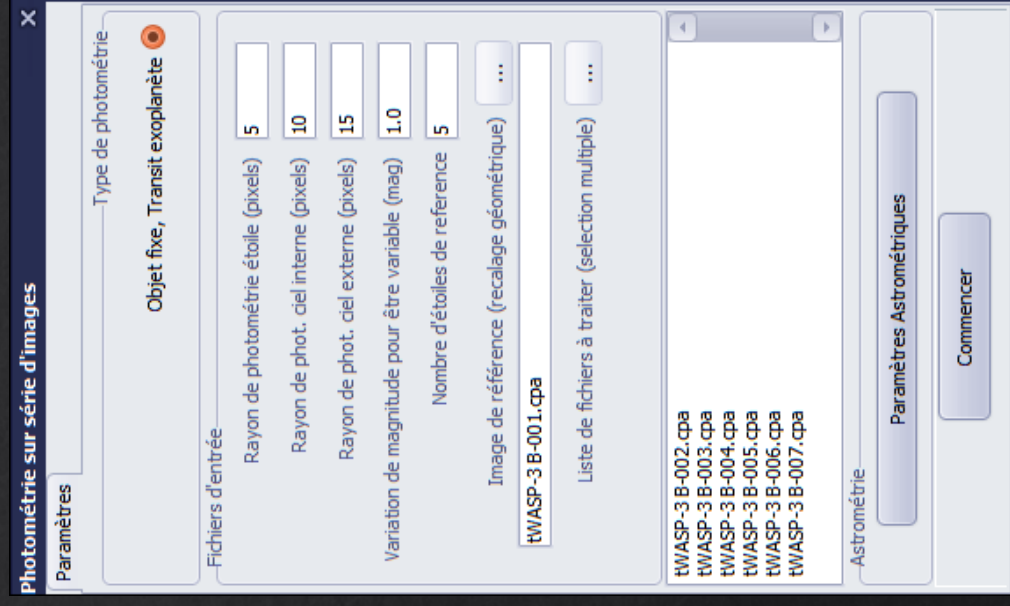
Informations statistiques spectro

X1=51, Y1=778, X2=449, Y2=837

Min=71.2 Max=8199.5 Median=116 Ecart.type=193.7

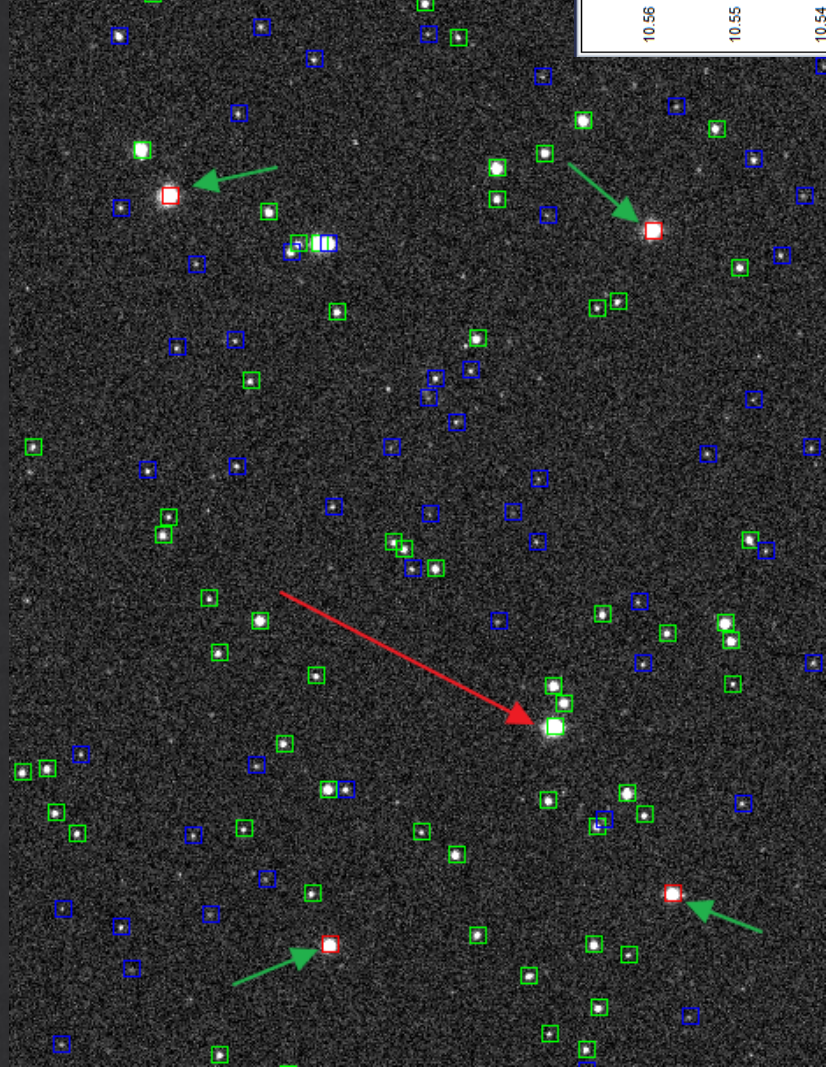


Une fonction d'analyse photométrique.

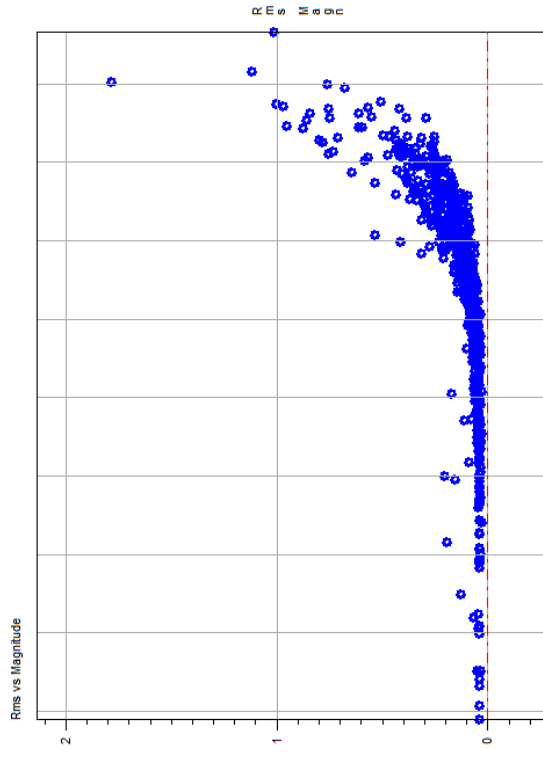


- ◆ Fonctions de base sont déjà dans Prism
- ◆ Base : lot d'images et le moins de paramètres possibles
- ◆ Exécute aussi l'astrométrie
- ◆ Objet mobile à venir (astéroïde)

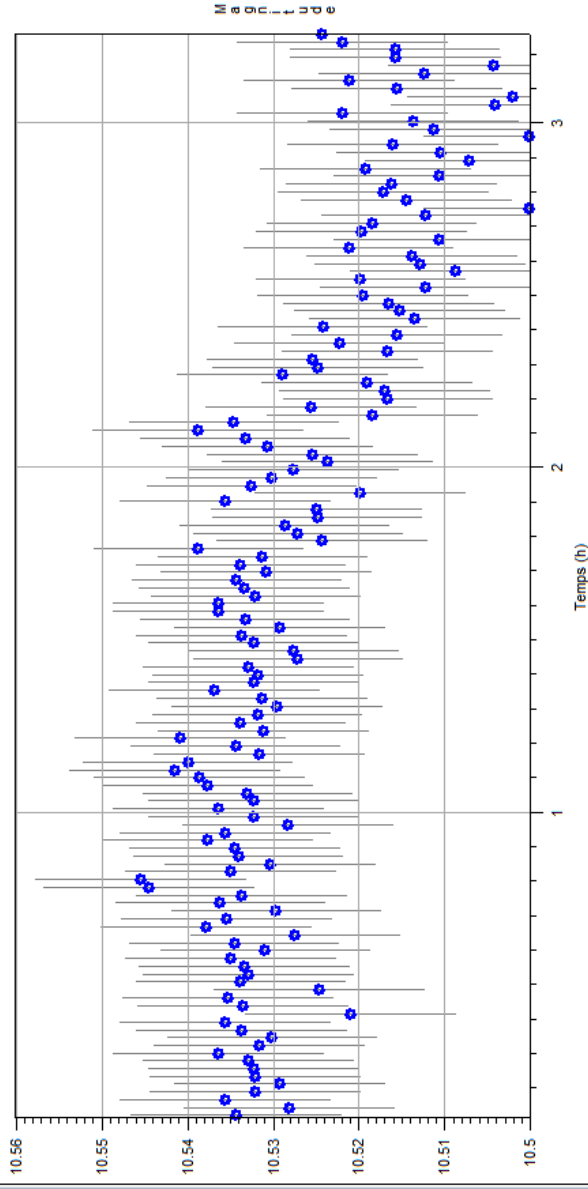
Une fonction d'analyse photométrique.



Rms vs Magnitude



31/05/2015 22:58:46, étoile n°4 (X=790 Y=311) Alpha=18h34m31.607s Delta=-35°39'40.02"



Hot product 2016 (Sky&Telescope)

